

ITINERARY FOR MX-5 CLUBS FROM THE EAST VISITING WESTERN AUSTRALIA

PREPARED BY



CONTENTS

Welcome to Western Australia.....	3
About the Modules	3
Driving Distances.....	6
Accommodation.....	7
Module 1 – Goldfields.....	8
Kalgoorlie Sights.....	8
Module 1A – Northern Goldfields.....	9
Module 1B – Golden Pipeline.....	10
Module 2 – Perth and Surrounds.....	11
Perth Sights	11
Module 2A – Kings Park, River & Ocean.....	12
Module 2B – Avon Valley	12
Module 2C – Darling Ranges	13
Module 2D – New Norcia & The Pinnacles	14
Module 2E – Perth to Busselton.....	14
Module 3 – Geographe	16
Geographe Sights	16
Module 3A – “Geographe Rally”	16
Module 3B – The Golden Triangle.....	17
Module 4 – Southern Forests.....	18
Pemberton Sights	18
Module 4A – Karri Forest Explorer.....	19
Module 4B – Southern Forest	19
Module 5 – South Coast.....	21
Albany Sights	21
Esperance Sights.....	22
Module 5A – Three Peaks Drive	22
Module 5B – Torndirrup National Park & Discovery Bay.....	23
Module 5C – Mount Barker, Porongurup’s and Two Peoples Bay.....	23
Module 5D – Fitzgerald Coast	24
Module 5E – Great Ocean Drive.....	24
Module 5E – Wave Rock.....	25
Module 5X – Albany to Perth	25
Module 6 – Northern Exposure	26
Karijini Sights	26
Coral Bay Sights	26
Shark Bay Heritage Area Sights	27
Kalbarri Sights.....	27
Module 6A – Kal to Meeka.....	28
Module 6B – to Karijini Eco Resort.....	29
Module 6C – to Coral Bay.....	30
Module 6D – Coral Bay to Shark Bay.....	30
Module 6E – Shark Bay to Kalbarri.....	30
Module 6F – Kalbarri to Perth.....	31
Module 6X – Perth to Meeka	31
Spring 2019 Itinerary.....	32
Spring 2019 Itinerary, Dates, Modules and Distances.....	33
Ratings.....	34
You want more?.....	34
Sources.....	34

WELCOME TO WESTERN AUSTRALIA

Here, you can experience Australia's sunniest capital city, whitest beach and largest expanse of outback, one of the oldest known living cultures on Earth, UNESCO World Heritage reef and rock formations, world-class surf, premium wines, and still have plenty of reasons to return.

Western Australia is an expansive state made up mostly of arid outback terrain. Its population is concentrated in its fertile southwest corner, home to the Margaret River wine region and popular surfing spots. Its capital, Perth, is known for its abundant parkland, beaches and snorkelling sites. Across the Swan River is Fremantle, a port city noted for its 19th century architecture. Western Australia is large; it covers an area of more than 2.5 million square kilometres – that's about the size of Western Europe, 12 times the size of Victoria, three times the size of New South Wales and one-third of Australia's total landmass. So, seeing it all in one visit is an impossible task.

Whilst we lack the twisty roads you can find in Tasmania or the Victorian High Country we do have some very nice drives - According to the [UK Telegraph newspaper](#) the drive from Perth to Albany via Margaret River is one of the 10 best drives in the world's for spectacular scenery, incredible cultural experiences and impressive culinary pit stops and one of the world's ultimate driving holidays.

Highlights include the Bunbury Dolphin Discovery Centre in Koombana Bay; the coast around Meelup Beach and Bunker Bay; the Margaret River wine region; surf spots such as Surfers Point and Cape Leeuwin Lighthouse; off-road cycling on the Munda Biddi Trail; hiking on the Bibbulmun Track; and the historic port of Albany. Also outstanding are Torndirrup National Park, known for its whale-watching (also see the rock formations known as The Gap, The Natural Bridge and The Blowhole), and the Skyhook Helicopter tours over Breaksea Island. Apart from the off-road cycling on the Munda Biddi Trail and hiking on the Bibbulmun Track all of these activities are included in the modules we prepared for you!



ABOUT THE MODULES

We have put together five modules that take you through most of the south west of the WA. From the Goldfields to Perth and surrounding areas before exploring the Geographe Area, Southern Forest and South Coast.

We have a sixth module for those who want to explore some of the fabulous areas in northern WA accessible via blacktop including Karijini National Park, Ningaloo Reef, the Shark Bay Heritage area and Kalbarri.

Module 1 – Goldfields

Based in Kalgoorlie – Boulder and includes a drive into the Northern Goldfields and the drive to Perth along the golden pipeline.

Module 2 – Perth & Surrounds

This is the club's playground for our first Sunday of the month cruises and we have included four drives in this region. These include a relaxed cruise along the river and ocean, a long cruise through the Swan and Chittering Valleys to New Norcia and the Pinnacles, a run combining twisty sections around the dams in the Darling Ranges, including the Zig Zag, with John Forrest National Park and Mundaring Weir. It also includes a trip to the Avon Valley and the drive south of Perth to Busselton our base to explore the Geographe region.

Module 3 – Geographe

Has two drives; the "Geographe Rally" that takes you along two of the better drives in WA, Caves Road and Nannup – Balingup Road, and includes observation questions and a quiz. And a drive that takes you to the start of Module 4 in Pemberton via the golden triangle.

Module 4 – Southern Forests

Has two drives; the Karri Forrest Drive around Pemberton and the Southern Forest Explorer that takes you to Albany via Northcliffe, Valley of the Giants, Greens Pool and Scottsdale Tourist Drive.

Module 5 – South Coast

Has five drives; from Albany we have the Three Peaks Drive, Torndirrup National Park & Historic Whaling Station and the Mount Barker, Porongurup's and Two Peoples Bay drives. Next is the Fitzgerald Coast drive to Esperance via the Stirling Ranges and Fitzgerald National Park and in Esperance we have the Great Ocean Drive. In addition there are two drives to return to Perth from either Albany or Esperance, the later via Wave Rock.

Module 6 – Northern Exposure

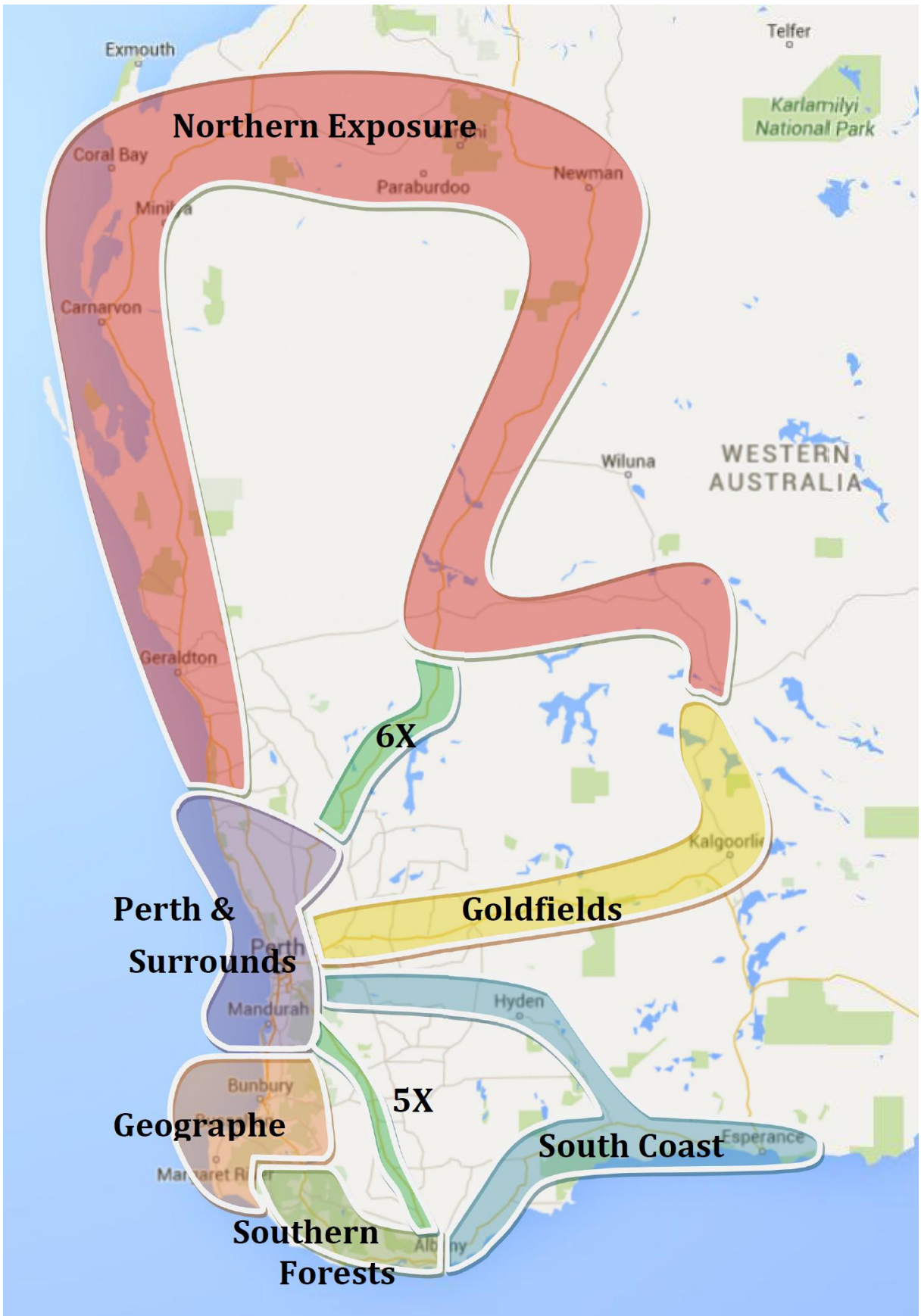
This module has a series of six drives that take you from Kalgoorlie to Karijini National Park, Ningaloo Reef and the Shark Bay Heritage Area, before continuing via Kalbarri to Perth. If you want to explore Module 6 from Perth we have a substitute Module 6X for module 6A.

Apart from the drives we have included some suggestions in each module to explore the local sights that are not covered by the drives in the modules.

The idea is that you can mix and match modules and drives to suit your time frame. The numbering assumes you drive across the Nullarbor to Kalgoorlie, but you can also fly to Perth, hire a car and start from Module 2 and drive back to Perth after Module 4 or 5.

If you do all the drives in Modules 1 to 5 you are up for some 4540 km in addition to the drive from your home to Kalgoorlie and return from Esperance.

If you want to explore the northern part of WA and substitute Module 6 for Module 1 that adds around 2850 km to your trip.



DRIVING DISTANCES

Drive	Name	Start	Finish	Distance [km]
1A	Northern Goldfields	Kalgoorlie	Kalgoorlie	575
1B	Golden Pipeline	Perth	Perth	640
2A	Kings Park, River & Ocean	Kalgoorlie	Perth	72
2B	Avon Valley	Perth	Perth	295
2C	Darling Ranges	Perth	Perth	160
2D	New Norcia & Pinnacles	Perth	Perth	512
2E	Perth to Busselton	Perth	Busselton	320
3A	Geographe Rally	Busselton	Busselton	400
3B	The Golden Triangle	Busselton	Pemberton	265
4A	Karri Forests Explorer	Pemberton	Pemberton	83
4B	Southern Forests	Pemberton	Albany	290
5A	Three Peaks Drive	Albany	Albany	20
5B	Torndirrup NP & Discovery Bay	Albany	Albany	63
5C	Mt Barker, Porongurup's & Two Peoples Bay	Albany	Albany	190
5D	Fitzgerald Coast	Albany	Esperance	615
5E	Great Ocean Drive	Esperance	Esperance	40
5F	Wave Rock	Esperance	Perth	720
5X	Albany to Perth	Albany	Perth	424
6A	Kal to Meeka	Kalgoorlie	Meekatharra	870
6B	Meeka to Karijini Eco Resort	Meekatharra	Karijini NP	870
6C	Karijini NP to Ningaloo Reef	Karijini NP	Coral Bay	670
6D	Ningaloo Reef to Shark Bay	Coral Bay	Denham	610
6E	Shark Bay to Kalbarri	Denham	Kalbarri	430
6F	Kalbarri to Perth	Kalbarri	Perth	620
6X	Perth to Meeka	Perth	Meekatharra	775

ACCOMMODATION

Kalgoorlie – Boulder

- [Rydges Kalgoorlie Resort and Spa](#)
- [Ibis Styles Kalgoorlie](#)
- [The View on Hannans](#)

Perth

Plenty of choice; suggest you stay away from the CBD and look for something along the beach:

- [Rendezvous Hotel Perth](#)
- [Quest Scarborough](#)
- [Ocean View Motel](#)

Busselton:

For accommodation options see www.geographebay.com.

Pemberton: try one of the [local B&Bs, cottages or chalets](#) or pick from one of these:

- [Best Western Pemberton Hotel](#)
- [Karri Forest Motel](#)
- [Gloucester Motel](#)
- [Karri Valley Resort](#)

Albany

- [Ibis Styles Albany](#)
- [Dog Rock Motel](#)
- [Albany Harbourside](#)

Esperance

- [Best Western Hospitality Inn Esperance](#)
- [Comfort Inn Bay of Isles](#)
- [Bayview Motel](#)

Meekatharra

For accommodation options see [Meekatharra Accommodation Centre](#)

Karijini

- [Karijini Eco Resort](#)

Coral Bay

- [Ningaloo Reef Resort](#)
- [Bayview Coral Bay](#)

Kalbarri

- [Kalbarri Palm Resort](#)
- [Kalbarri Accommodation](#)
- [Kalbarri Edge Resort](#)

Denham

- [Oceanside Village](#)
- [Shark Bay Hotel](#)
- [Seaside Tourist Village](#)
- [Tradewinds Seafront Apartments](#)

MODULE 1 – GOLDFIELDS

The start of the module is the historic mining city of Kalgoorlie - Boulder, the biggest city in the Australian outback, Kalgoorlie is a vibrant mix of gold rush history, grand colonial buildings and immense mining operations, surrounded by some of the most dazzling spring wildflowers and eerie gold-rush ghost towns.

'Kal', as the locals call it, was born during the 1880s gold rush, when thousands of starry-eyed prospectors made the journey east of Perth to seek their fortunes. Today, their legacy lives on in magnificent architecture and one of the world's largest open cut mines - the Super Pit; 3.5 kilometres long and 1.5 kilometres wide, the pit produces 900,000 ounces of gold each year.

KALGOORLIE SIGHTS

For a real slice of gold rush life and Goldfields culture, check out:

- Get an introduction to gold rush life at the [Kalgoorlie-Boulder WA Museum](#). See how prospectors searched for gold, learn about the hardships they faced, and gaze in awe at the largest display of the State's collection of gold bars and nuggets.
- The [Royal Flying Doctor's Visitor Centre](#) at the Kalgoorlie Airport is both a Visitor Centre and working base provides an extraordinary insight into the work of one of Australia's truly legendary organisations. Entry is by donation, and the friendly 45 minute guided tours will take you through the chronicles of Royal Flying Doctor Service history.
- [Questa Casa](#), located at 133 Hay Street, is the oldest working brothel in Australia, built at the turn of the 20th century, Questa Casa is still operational, it is the last of the gold rush era brothels that once lined Hay Street. Tours conducted at 3pm for curious visitors 18 and older only. Questa Casa sure to surprise and enlighten!
- Take a peek from the [Super Pit Viewing Platform](#) or pull on a hard hat for a mind-blowing tour of one of the world's largest open cut mines – the [Super Pit](#). Part of the historic Golden Mile, the modern-day pit is a colossal 3.5 kilometres long and 1.5 kilometres wide.
- No visit to Kalgoorlie is complete without a visit to [Hannans North Tourist Mine](#), where you will experience a vibrant mix of gold rush history and modern day mining. During your visit you can climb onto a giant 793C haul truck, stand in the shovel of a 994F loader, listen to Paddy Hannan tell his tale of discovery, pan for gold and try your hand at the legendary game of "Two-Up". After exploring you are welcome to make use of the free BBQ facilities or picnic in the Garden of Remembrance. Before leaving, pick up a unique souvenir in our gift shop. Open Sunday to Friday, 9am – 4pm.
- The hub at the height of the gold rush was the historic Golden Mile, in the town of [Boulder](#). Here, you can wander along Burt Street and admire its rich gold rush heritage. Visit the [Miners Monument](#) and the [Boulder Town Hall](#) was built in 1908, and is a beautifully preserved heritage building with pressed tin ceilings and wrought iron balustrades. View the old council chambers upstairs or check out the acoustics of the main hall. It is also your only chance to catch a glimpse of the famous [Goatcher Curtain](#), believed the last surviving example of its kind of theatre curtain in the world.
- For the best sunset views of Australia's largest outback town, head up to [Mount Charlotte](#) in the late afternoon.

MODULE 1A – NORTHERN GOLDFIELDS

Scenery   

Sights   

Zoom Zoom   

Make an early start to visit gold rush ghost towns, abandoned mines and gaze in awe at the remarkable work of [Antony Gormley](#) – who transformed a salt bed into one of the most remarkable outdoor galleries on Earth. Here, stretching across 10 square kilometres, a collection of 51 individually cast black chromium steel sculptures, each representing one of the Menzies residents, stand against the dramatic backdrop of Lake Ballard's white salt plain. Please note that this drive includes 100 km of unsealed road to visit Lake Ballard, if your Five loathes gravel you may want to skip that section or book a coach tour to the Northern Goldfields instead.

Our first stop is [Menzies](#) is one of Western Australia's most historic gold boom towns, now home to approximately 150 citizens. Gold was first discovered here in 1894 by an American adventurer, Robert Menzie, and his mates. Their first discovery was to become the very rich and famous Lady Shenton mine, the primary catalyst for the establishment of a thriving township, officially gazetted as Menzies on 20 December 1895. At its height, Menzies is believed to have had around 10,000 residents, was the unofficial capital of the North Coolgardie Goldfields and boasted 13 hotels, three banks, and a 50 bed hospital, its own breweries and cordial factories, a Post Office with a staff of 25, a school with 205 pupils, a public library (in 1904) and four churches.



Next we head for [Gwalia Ghost Town and Museum](#) where you can explore over a dozen buildings including miners' cottages, single men's camps, Patroni's Guest House and Mazza's Store. Up on the hill in the Mine Precinct, there are the Mine Manager's House (now Hoover House Bed & Breakfast), the Assay Office, the headframe and winder and many

fascinating outdoor exhibits. Highlights include 'Midland', one of three steam engines that worked on the woodlines supplying mine with timber and fuel.

For lunch we travel a few kilometres to [Leonora](#) which, like so many of the small goldmining towns in the Eastern Goldfields, has had a chequered history.

After Lunch we head for [Lake Ballard](#) to enter the largest outdoor art gallery on Earth.



Next we head back to Kal via Menzies.

MODULE 1B – GOLDEN PIPELINE

Scenery   

Sights   

Zoom Zoom   

The Golden Pipeline is one of the world's greatest engineering marvels - a pipeline built 100 years ago to carry water from Mundaring Weir just outside of Perth, to the remote and arid goldfields of Kalgoorlie 560 km to the east. This 640 km drive takes you from Kalgoorlie to Perth with some short side trips to N^o 8 Pumping Station, Karalee Rocks, Totadgin Rocks and N^o 3 Pumping Station.



Engineered by C.Y. O'Connor and built between 1898 and 1903, the pipeline delivers water 560 km from Mundaring to Kalgoorlie. It has been a lifeline to the arid interior of Western Australia for more than 100 years and was central to the development of the State.



The newspapers of the time had a field day criticising the project and eventually the strain got too much for C.Y. O'Connor to bear; having taken years of persistent, scurrilous but unfounded attacks from the press, politicians and peers, O'Connor, with gun in hand, rode into the Indian Ocean at Robb Jetty, south of Fremantle and shot himself on the 10th of March 1902. It seems ironic that he chose to end his life in the water, as his great achievements were all about resolving water problems.

In 2008 the golden pipeline was named a world engineering landmark, 106 years after being built, ranking it alongside engineering feats such as the Sydney Harbour Bridge, the Snowy Mountain Scheme, the Eiffel Tower, Panama Canal and the Golden Gate Bridge.

MODULE 2 – PERTH AND SURROUNDS

Perth is located at the widest stretch of the Swan River, home to some of Australia's best beaches and Australia's sunniest capital. We enjoy about 3000 hours of sunshine a year, a great place to drive a convertible! No wonder it's been voted one of the world's most liveable cities. Within a 100 km radius of Perth are the Avon, Swan and Chittering Valleys as well as the Darling Scarp and the Hills forests.

PERTH SIGHTS

- Wander one of the biggest city parks in the world, [Kings Park and the Botanic Garden](#). Start at the [War Memorial with the Eternal Flame in the Pool of Reflection](#) and enjoy the great views of the Swan and Canning Rivers, the City skyline and Darling Ranges. Next walk amongst the treetops at the nearby [Lottery west Federation Walkway](#) and if you are energetic climb the [DNA Tower](#).
- Explore Perth's Museum, Gallery and Zoo - Discover more about Australia's amazing west coast at the [Western Australian Museum](#), with its fascinating local scientific and cultural collection. Delve into an extensive collection of Indigenous art at the [Art Gallery of Western Australia](#). Make time for [Perth Zoo](#), dedicated to conserving Australian wildlife.
- Chill Out or Surf at Perth's Best Beaches - Don't miss Perth's beachside towns. Stop in Scarborough for coffee at funky cafés [Wild Fig](#) and [Kinky Lizard](#) before taking to the waves at Trigg and North Beaches. Closer to the city centre, watch the sunset across the waters of Cottesloe Beach, a great spot for families and picnics under shady Norfolk Pines.
- Hop on a Ferry to Rottnest Island and meet Quokkas - Feel a world away on [Rottnest Island](#), even though it's only 19 kilometres from Perth. Access this car-free island by ferry, helicopter or private boat. Relax on one of more than 60 beaches, snorkel coral reefs, dive shipwrecks and explore history. Best of all; get close to the cute quokka.
- Plan a Swan Valley Winery Day Trip; head to the [Swan Valley](#) where you'll find 40 vineyards and cellar doors offering tastings in Western Australia's oldest wine region.
- Visit the Historic Seaside Port of Fremantle - Thirty minutes from Perth's centre, Fremantle Harbour has its own special character. See 140 years of convict history unfold before your eyes as you step inside the old walls of World Heritage listed [Fremantle Prison](#). Delve into seafaring history at the terrific [Maritime Museum and Shipwreck Galleries](#), then drink from a choice of 43 tap beers at the 1843 landmark [Sail & Anchor](#). Visit famous craft brewer [Little Creatures](#)' Freo HQ.
- Take a tour of the [Perth Mint](#); marvel at the largest coin ever made, view Australia's most dazzling display of natural gold nuggets, watch molten gold being poured to form a solid gold bar; handle more than \$500,000 worth of gold bullion and much more!
- In the evening hop on a [Ferry](#) to South Perth and head Sir James Mitchell Park on the south Perth foreshore to take [the quintessential Perth CBD photo](#) with the city lights reflected in the river.
- Take a stroll around [Elizabeth Quay](#) and climb the [Bell Tower](#).
- Cruising at 300 m with the wind in your face is arguably the best way to see Perth; hop on the [Red Baron](#), a two-passenger, open-cockpit biplane on floats that operates from Barrack Street Jetty.



MODULE 2A – KINGS PARK, RIVER & OCEAN

Scenery 

Sights 

Zoom Zoom 

This short 72 km cruise starts on the South Perth foreshore and takes you through Kings Park and along the River through Crawley, Nedlands, Claremont, Dalkeith, Swanbourne, Cottesloe, Peppermint Grove, Mosman Park, Floreat, Jolimont, Wembley and City Beach to Fremantle so you can see how the other half lives. We finish at Hillarys Boat Harbour with plenty of restaurants and bars to sit back and relax, or visit [AQWA](#) which boast Australia's largest single aquarium and walk-through underwater tunnel. If you are game you can snorkel with the sharks.



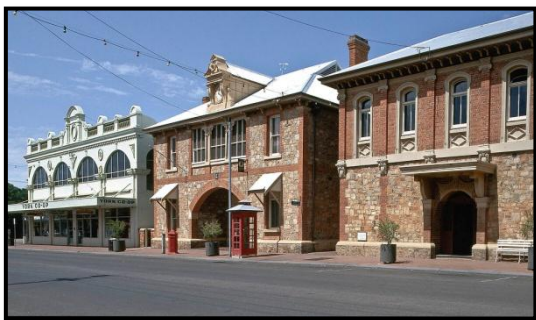
MODULE 2B – AVON VALLEY

Scenery 

Sights 

Zoom Zoom 

This 295 km cruise combines a drive through Brigadoon and the former TargaWest stage of O'Brien's Road (discontinued as a stage after Peter Brock's death) to Bakers Hill with a section of the Avon Valley Historic Drive. York, our first stop in the Avon Valley, is the oldest inland town in Western Australia, dating back to 1831. Wander the main street and check out the [Old Gaol and Court House](#) built from local stone and opened in 1895 by Sir John Forrest. Restored by the National Trust you can view the restored prison cells and court rooms (still used as Court of Petty Sessions).



Don't miss the [York Motor Museum](#); established in 1979, it is one of the finest private collections of Veteran, Vintage, Classic and Racing Cars in Australia. Housing the Peter Briggs collection of approximately 50 vehicles, the museum presents the evolution of motor transport with prime examples of the finest quality and workmanship from each era.



Northam is your next stop, gazetted in 1836; it is the largest inland town in Western Australia and the commercial centre for the surrounding farming district. Northam is second only to Fremantle for the number of heritage listed buildings in WA. Historic [Morby Cottage](#) and the [Old Northam Railway Station](#) are open to the public, and together with the interpretation centre at the Visitor Centre and Cafe provide visitors with an insight into Northam's natural and cultural history. Behind the visitors centre you can walk Australia's longest suspension bridge which is the starting point for the popular Avon Descent.



Last stop in the Avon Valley is Toodyay where we stop at [Cola Cafe and Museum](#); a 1950's style Café featuring a unique collection of Coca-Cola memorabilia. Across the road you can

visit [Connor's Mill](#), a fine example of colonial history and architecture of that is a testimony to Toodyay's busy agricultural industry during the developing years. The triple-storey brick mill was constructed 1870 and operated as a steam-powered flour mill for around 50 years before being converted to a power house in the 1920s. Today, this museum displays working historic machinery and an interpretative display of the mill's operations demonstrates the process of turning wheat into flour.

MODULE 2C – DARLING RANGES

Scenery 🚗🚗🚗

Sights 🚗🚗🚗

Zoom Zoom 🚗🚗🚗

There are four regroup points on this 160 km cruise which start from Britannia Coffee Lounge in Maddington and ends 15 km from Perth at the Woodbridge Hotel. We regroup at the [Churchman Brook Dam](#); built in the 1920s its capacity is 2.24 million kilolitres and you can walk across the dam wall for a better look.



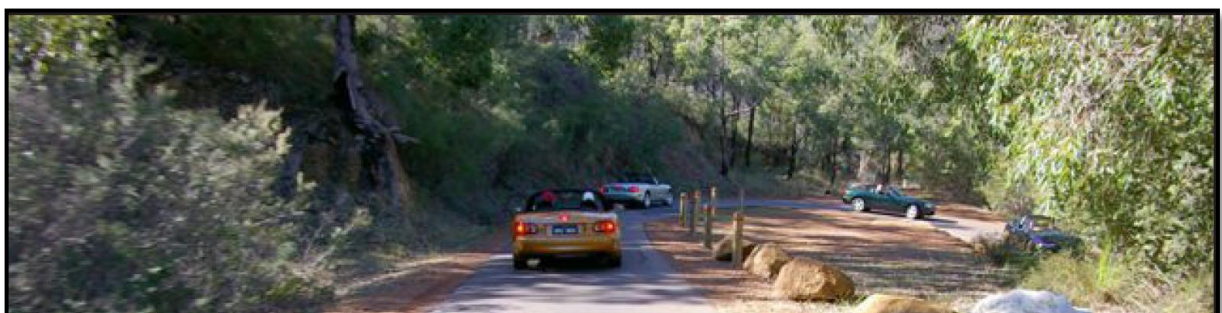
Next stop is the [Canning Dam](#) which has supplied water to Perth since 1924 when a pipehead dam was built near Araluen, 6km downstream from the present Canning Dam. The construction of Canning Dam, which began in 1933, was the state's biggest public works project during the Great Depression of the 1930s. It was a vast undertaking for the period and provided desperately needed work. At the western end of the valley, downstream from the dam wall, the workforce lived in their own

township, complete with a post office, general store, recreation hall and school house. Again you can walk across the dam wall to enjoy view.

The third regroup is at Mundaring Weir which has a capacity of 63.6 million kilolitres and supplies water to the Goldfields and Agricultural region. Desalinated seawater and groundwater is pumped into Mundaring Weir to supplement this water supply. The views from the 308 m long wall are worth the stroll and there is usually an ice cream van at the car park.



The last regroup is at the top of the Zig Zag, with spectacular views over Perth that was once part of the [Upper Darling Range Railway](#). To overcome a steep gradient up the Darling Scarp, a zig zag line was built between Ridge Hill and Gooseberry Hill stations, being cheaper to build than a continuous gradient line. The track was removed in 1952 and it was converted into a narrow one-way bitumen road. We drive down it but it's used as a TargaWest stage in the uphill direction.



MODULE 2D – NEW NORCIA & THE PINNACLES

Scenery   

Sights   

Zoom Zoom   

A 512 km drive through the Swan and Chittering Valleys to New Norcia, Australia's only Monastic Town, followed by a visit to the Pinnacles and returning along Indian Ocean Drive.



Founded in 1847 [New Norcia Monastery](#) Spanish architecture buildings include the two old boarding schools, the Abbey Church, an old mill, a wine press, a hotel and the monastery itself. Join the 11am tour to hear stories of the town's changing history, visit castle-like St Ildephonsus' and St Gertrude's Colleges. They are striking enough from the outside but the highlight of the tour is discovering what awaits you on inside.

After the tour enjoy lunch at the Hotel before continuing to the Pinnacles, one of Western Australia's iconic tourist attractions; a barren, otherworldly desert of stone pillars rising up out of the golden sand. Ranging in size from less than a foot to 3m high, these mysterious rocks form ghostly shapes and shadows. We return via the Indian Ocean Drive which never strays too far from the coast, and has colourful scenery with stretches of sparkling white sand hills.



MODULE 2E – PERTH TO BUSSELTON

Scenery   

Sights   

Zoom Zoom   

A 320 km scenic drive along the edge of the Serpentine National Park, across the Serpentine Dam and via Lane Pool Reserve, the Collie and Ferguson Valleys to [Gnomesville](#). The drive starts at the [Byford Tavern](#) 49 km south of Perth and finishes in Busselton.

Leg 1 takes you to [Cafe on the Dam](#) at the Serpentine Dam; one of the biggest dams in Western Australia supplying drinking water to Perth, construction of the dam was completed in 1961. Leg 2 to Waroona is in three parts; The first section from North Dandalup to Dwellingup is undulating and has some moderate twisties. From Dwellingup to Nanga Brook the road becomes much narrower and the forest closes in around you before the road opens up in the last section to Waroona with some nice corners to boot. We stop at the [Waroona Hotel](#) for lunch.



Leg 3 includes a nice one-way section along the Collie River, Wellington Mills Road (used for hill climbs) and ends at Gnomesville: A long, long time ago, a Gnome was travelling on an Australian country road. It was at night and far from anywhere. All around was leafy and green; a pleasant place. By and by, he came to a fork in the road. He followed the road, which seemed to go around and around. Now, being a little person, he could not see over the curb. If he did, the story would have ended here. He walked all night with the feeling he was going



nowhere. Roads branched off every so often. By the morning, he was exhausted. Then it was clear. He had come across a ROUNDABOUT—a circular intersection in the middle of (almost) nowhere. This was something he had never seen as a country traveller.

But it was a nice place and reminded him of home. There was a bubbling brook and shady trees. So he stayed a while. Other Gnomes passed and visited, and many stayed. Word passed around. Gnomes from far and wide left their gardens and came to visit. But they stayed. This was something new for the mostly solitary Gnomes. So Gnomesville was born.

More than 3000 gnomes live in the quaint little hamlet; have a wander around and bring a gnome from your home town to add to the growing population.

Can you find the Gnome driving a Five?



Leg 4 takes you through the Tuart Forest to Busselton; our base to explore the Geopraphe Area.



MODULE 3 – GEOGRAPHE

Busselton was twice voted Western Australia's Top Tourism Town, and is just a short hop from the Margaret River wine region. Its iconic, heritage-listed jetty was originally built in 1865, and a ticket to ride with the Busselton Jetty Experience takes you all the way to the end to get a glimpse of the colourful fish and tropical corals that have made it their home, thanks to the warm waters of the Leeuwin current.

Along the north-facing shoreline, the tranquil waters, white sands, lush lawns and shady pine trees of the main swimming beach offer the perfect setting for a family day beside the sea. Here, and along a 30-kilometre coastline of immaculate beaches, you can try your hand at fishing, water skiing, snorkelling, scuba diving, windsurfing, kayaking or sailing in the calm waters of Geographe Bay. A short walk from the main beach brings you to Busselton's main street, where you can browse boutique fashion, designer home wares, surf gear and antiques. Take a detour down Fig Tree Lane and you'll find yourself in a quaint little retail enclave of fashion, beauty and refreshments.

GEOGRAPHE SIGHTS

- Explore Margaret River Wineries, from the first commercial vineyard planting in Margaret River in 1967; the region's natural assets have blended with the ability of the vignerons and winemakers to create a wine region that is one of the best on the planet. The pristine environment and the many micro climates ensure that every wine is special and different from the next. Use the [regional map](#) to meander from cellar door to cellar door, there are over 95, many of which have casual cafés ranging to world-class restaurants. Check out [Voyager Estate's](#) Cape Dutch architecture and stunning gardens or [Arvina Estate's](#) sports car collection! If you are not a wine person fear not, Margaret River is home to many award winning [Breweries](#) or head to [Yahava KoffeeWorks](#) for an adventure in a cup.
- In Busselton it's all about the longest timber-piled jetty in the southern hemisphere; [take the train](#) or a leisurely stroll out the 1.8 km jetty to the [Underwater Observatory](#), voted the 'No.1 Aquarium in the South Pacific' by Trip Advisor, to Australia's best artificial reef
- Head to Bunbury to visit the [Dolphin Discovery Centre](#), one of Australia's premier wild dolphin destinations where you learn more about these magnificent creatures, take a [Dolphin Eco Cruise](#) around the Bay or interact with the dolphins in their own environment on a [Swim on the Wild Side Tour](#). There is also the [Interaction Zone](#) where the wild dolphins often come to interact with visitors.

MODULE 3A – “GEOGRAPHE RALLY”

Scenery 

Sights 

Zoom Zoom 

The Geographe Rally takes you over some of the better drives in the Geographe hinterlands and Jarrah forest, including Caves Road and the 44 km of winding bending, twisting bitumen that follows the Blackwood River, through some great scenery whilst visiting some interesting places along the way. There are observation and quiz questions, but the degree of difficulty has been set relatively low so that you can enjoy the scenery while still having fun and a bit of a challenge. In fact the whole observation bit is optional if you just want to do the drive. The start is a Castle Rock car park, 30 minutes from Busselton. Lunch is at [Hamelin Bay Wines](#); they have hot pot pies, quiche and gourmet platters of selected local produce and we finish near Busselton.



MODULE 3B – THE GOLDEN TRIANGLE

Scenery 🚗🚗🚗

Sights 🚗🚗🚗

Zoom Zoom 🚗🚗🚗

This 265 km drive includes two of WA's better Tourist Drives; the 251 from Balingup to Nannup and the 252 from Nannup to Bridgetown aka the Golden Triangle; you drive along towering jarrah and karri tree lined roads in the heart of tall timber country.

Leg 1 starts at the Goose Beach Bar & Kitchen near the Busselton Jetty and takes you to the [Old Cheese Factory](#) in Balingup; whilst cheese is no longer made on site they claim to be the WA largest craft centre where you can find just about every handcrafted good in existence, including stoneware pottery, timber products, aboriginal crafts, t-shirts, furniture, etc.

Leg 2 takes us to Bridgetown nestled amongst the hills on the banks of the Blackwood River which has the rare combination of old world charm and modern facilities with many fine old building restored to their former glory. As the name suggests Bridgetown has been the site of several bridges across the Blackwood; the most recent was built in 1981 and the colossal 127.5 metres long jarrah structure is the last of the large wooden bridges Western Australia. This leg includes Tourist Drive 251; 44 km of winding, bending, twisting bitumen that follows the Balingup Brook and the Blackwood River past farmland, bushland, and pine plantations. Signs warning of bends are random and don't indicate the severity of bends even when they do exist and if they put one sign on every bend they would run out of signs. Some bends are posted one way but not the other and so the whole thing is a bit of an adventure. Leg 2 finishes at the [Bridgetown Pottery Tearooms & Gallery](#), housed in one of the oldest buildings on Bridgetown's main street the tearooms feature a collection of memorabilia that reflects the history of the families that have called it home.



The pottery workshop now houses a collection of handcrafted pots from local potters, locally manufactured Bohemian Woodcraft, slumped glass platters and bowls, blown glass, works from the Horseshoe Nail Sculptor and exhibitions of fine arts. Wander in for a browse or just relax and enjoy some yummy homemade tucker.

Leg 3 takes you via Donnelly River and Manjimup to [Diamond Tree](#) before the finish in Pemberton. Before the introduction of spotter planes, foresters used to climb to the top of Diamond Tree and scan the landscape for the first signs of fire. The tree is now a tourist attraction that the fearless amongst us can climb. Round 1 of the State Rally Championship is held in this area and some sections of this drive are used as competitive stages.

MODULE 4 – SOUTHERN FORESTS

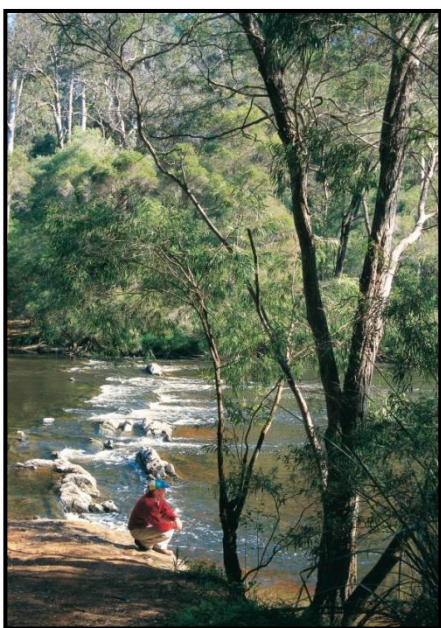
Picturesque Pemberton is the clean green jewel in Australia's South West, surrounded by towering Karri forests, waterfalls, rivers and lakes.

Memorable experiences in the Southern Forests Region include the famous Diamond, Gloucester, Bicentennial fire lookout trees, the cascading Beedelup Falls and Big Brook Dam.

For the connoisseur, the Pemberton Wine Region is recognised worldwide for the popular Sauvignon Blanc, Chardonnay, Riesling and Pinot Noir wines. Local galleries are located in town and out in the Karri forest in cafés, wineries or specialist galleries. The galleries display furniture, art and craft, exhibitions of photography and paintings.

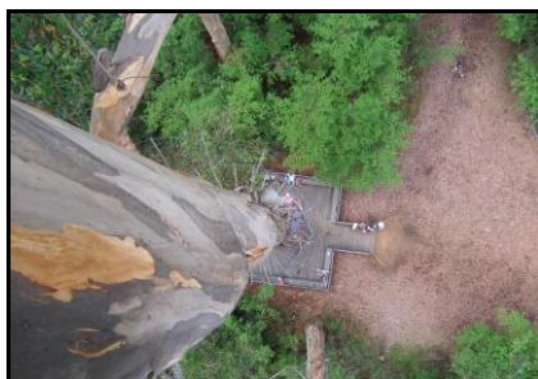
PEMBERTON SIGHTS

- [Warren National Park](#) is home to some of the state's most majestic karri trees. The 3,131-hectare park is regarded as a prime example of virgin karri forest. Karri (*Eucalyptus diversicolor*) grows up to 90 metres high, making it the tallest tree in Western Australia and one of the tallest in the world. It grows mainly from Nannup to Manjimup, through Pemberton and Northcliffe to Denmark. Some of these forest giants in Warren National Park are more than 200 years old. If you can tear your eyes away from the grandeur of the karri trees, you'll notice that the undergrowth is just as beautiful. River banksias, peppermints and Warren River cedar line the riverbanks while the pretty red coral vine and white clematis clamber over tree trunks and fallen logs. The 12 kilometre [Heartbreak Trail](#) descends into the Warren River valley, following the river for a while before climbing back up the karri-clad slopes. This steep track was built by hand to clear a path down to the river for fire fighters and the name reflects the hardship of



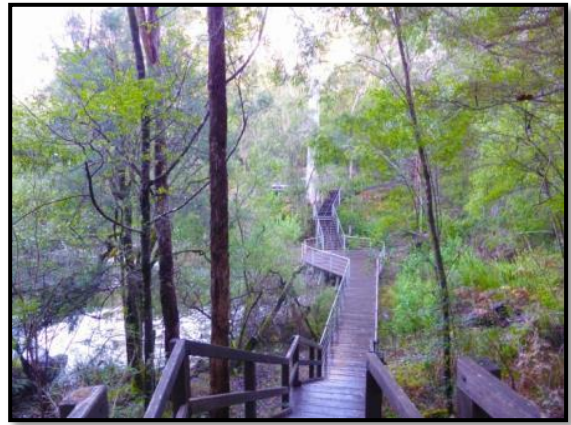
the job. The rapids of Heartbreak Crossing and the Warren Lookout are great stopping places along the trail. Please be aware that the Heartbreak Trail is a one-way, gravel road.

- The [Dave Evans Bicentennial Tree](#), in Warren National Park, is the tallest of the three fire lookout trees open to the public in the Pemberton area. It was pegged in 1988 as part of Australia's bicentennial celebrations. At 75 metres, the tree is not a climb for the faint-hearted. However, those who do climb the 165 pegs will be rewarded with 360-degree views of the karri forest and glimpses of the Yeagarup Dunes and coast beyond.



- [Beedelup Falls](#), which drop for 100 metres over a series of steep granite rocks. The best time to see the falls in full flow is in winter or early spring. You can access Beedelup Falls from a 300 metre walk trail from the car park. The trail takes you across the suspension bridge over Beedelup Brook. Walk trails leave from the falls in Beedelup National Park to the Karri Valley Resort.

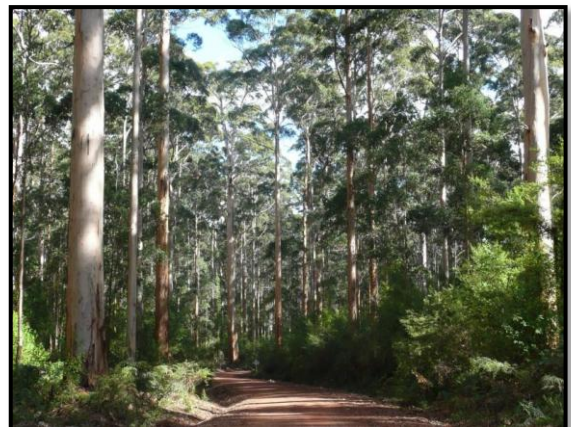
- [The Cascades](#) where the Lefroy Brook tumbles over a series of rocky shelves, which vary from a gentle flow in mid-summer, to a raging torrent in winter. It offers picturesque scenery, BBQ facilities / picnic area and there is a 40 minute walk trail around the area.



- Take the [Pemberton Tramway](#) for an unforgettable, 1³/₄ hr ride past the saw mill and descending into the Karri forest. The tram meanders through forest, crossing six bridges, stopping at the Cascades and at the Warren River Bridge, where the Lefroy Brook joins the Warren River before returning to Pemberton.

- Pemberton has a long history as a timber town and today [the Sawmill](#) is still the centre of Pemberton. The mill is the biggest in Australia, is completely computerised and is open for inspection. One hour tours are by appointment only; call 9776 1745 to make a booking. A minimum of four people are needed for each tour. Participants are required to wear closed in footwear, as well as long sleeve shirts and pants. There is no disabled access to the site.

- The [Great Forest Trees Drive](#) in the Shannon National Park is a Great Forest Trees Drive is a self-guided, 48 km drive that winds its way through spectacular old-growth karri, jarrah and marri forest. There are several stops along the way where you can stretch your legs, have a picnic or just enjoy the views. The drive starts from the day-use area on the northern side of the South Western Highway and finishes at the campground, south of the highway. Please note the drive is mostly gravel roads.



MODULE 4A – KARRI FOREST EXPLORER

Scenery 

Sights 

Zoom Zoom 

The [Dave Evans Bicentennial Tree](#), [Warren National Park](#), [The Cascades](#) and [Beedelup Falls](#) all feature on the 86 km [Karri Forest Explorer](#). It's a well sign-posted scenic drive that loops through many of the Pemberton attractions, including lookouts and wineries that show off the best the karri forest has to offer. Explore it at your own pace - stop for a picnic at Big Brook Dam, climb 61 metres to the Gloucester Tree lookout, see Beedelup Falls from the suspension bridge and stop for a wine tasting, coffee or a gourmet meal.

MODULE 4B – SOUTHERN FOREST

Scenery 

Sights 

Zoom Zoom 

A 290 km scenic drive from Pemberton to Albany through the southern forest region. The clear, crisp air and rich landscape of the southern forests region produce and nurture the magnificent forests of Karri, Marri and Tingle trees and a coastline with exhilarating views across the vast Southern Ocean.

Leg 1 takes you to [Northcliffe](#) where you can explore [Understory](#), an art in nature experience with artworks located along a 1.2 km walk trail through pristine native forest. Sculptures, stories, poetry and music explore the 'spirit of place'.



Leg 2 takes us to the Walpole – Nornalup National Park. Located within the heart of the Walpole Wilderness its wild coast is home to Tingle forests, which occur nowhere else in the world, and a patchwork of heath lands and wetlands. We explore the [Knoll scenic drive](#) a five kilometre sealed, one-way circular drive

located on the peninsula between the Walpole and Nornalup Inlets. Along the drive you can stop at the lookouts, walk down to one of the rock fishing spots, and picnic under the karri and marri trees.

Leg 3 takes you to the [Valley of the Giants - Tree Top Walk](#) features a stunning walkway of six 60-metre lightweight bridge spans on seven pylons, reaching a maximum height of 40 metres, over a small creek at the bottom of the valley amid the dizzying heights of the Tree Top canopies with



views over core wilderness. Next you can venture into the ancient

empire of 400 year old red tingle trees along a boardwalk that meanders across the forest floor.



Leg 4 takes you to [William Bay National Park](#) to explore the magical Greens Pool; sheltered from the waves of the Great Southern Ocean by rounded rock boulders typical for this area. From the lookout you can see out over the beach. The descent is a sealed path, gradually sloping to the top of the stairs which will take you onto the sand. It's just a few minutes from the car park to the beach.



Leg 5 takes you to Albany, the starting base location for the next module, via the [Scottsdale Tourist Drive](#), Denmark and the Lower Denmark Road.

MODULE 5 – SOUTH COAST

There are two base locations in this module; Albany and Esperance. The breathtaking beauty of **Albany's** rugged coastline creates a fitting backdrop to a dramatic whaling, convict and settler history and a sensational south coast adventure. This charming city marks the spot where the first European settlers set foot in Western Australia and much of their legacy remains today with around 50 colonial buildings standing proudly as museums, galleries and restaurants. Albany's King George Sound also marks the spot where the first convoy of ANZACs departed for the battlegrounds of the First World War. Today, you can follow their extraordinary stories through the National Anzac Centre's state-of-the-art interactive displays.

You'll also find some of the town's biggest tales in the Historic Whaling Station at Discovery Bay, the only museum of its kind to be housed in a former whaling station. The industry met its end in 1978, creating a safe port of call for migrating humpback, southern right and blue whales. Spot them from the shore or join a whale watching cruise for a magical encounter.

Esperance is blessed with squeaky-clean beaches, turquoise waters, untouched islands and colour-filled wildflower country. Among its most famous beauty spots is Australia's whitest beach, Lucky Bay - set against a stunning seascape of 110 islands of the Recherche Archipelago, even the kangaroos can't resist lounging here. The calm, clear waters of Blue Haven Beach and Twilight Cove, just a short drive from town, are idyllic spots for swimming and snorkelling. Locals say the lagoon just east of West Beach is worth a snorkel too.

If you're seeking waves, hit the surf at West Beach, Fourth Beach or Observatory Beach. To hook dinner, throw in a line at Tanker Jetty and keep a keen eye out for cheeky local, Sammy the seal.

ALBANY SIGHTS

- [Albany Convict Gaol](#); fully restored, displays include the Great Hall, warders' quarters and cells. Try a night tour that includes Hangman's Yard, ghostly tales, indigenous cell art, a death mask and the Black Hole.
- [Brig Amity](#); take a guided tour of the 1970s built replica of the sailing ship that brought the first European settlers to Western Australia.
- Visits [Patrick Taylor Cottage](#) an 11-room wattle and daub home is the oldest surviving dwelling in Western Australia, Built in 1832 by the Morley Brothers and purchased by Patrick Taylor in 1835. The cottage museum consists of an entry, boxroom, parlour, nursery, bedroom, dining room, family room, sewing room, kitchen, laundry and side veranda. Many beautiful artefacts, covering several eras, are displayed in the various rooms. The cottage is surrounded by a neat English cottage garden
- Humpback and Southern Right Whales head into Albany's sheltered bays for calving and mating and can often be seen from the look-outs. To get a close look go whale watching aboard [Sail-A-Way](#), a big catamaran, which sails daily from 9:30am - 12:30pm (weather permitting), sometimes the cruise may be longer, depending on where the whales are.



ESPERANCE SIGHTS

- Find a slice of ancient druid history with a full-size replica of [Stonehenge](#) just east of town. The Esperance Stonehenge is the only full size replica of the original Stonehenge in the UK. It appears as the original would have looked around 1950BC. It consists of 137 stones of Esperance Pink Granite that were all quarried locally less than 1 km from the Stonehenge's final resting place. 10 Inner Trilithon Stones form a horseshoe and weight between 28-50 tonnes each with an 18 tonne lintel laying over each pair reaching a height of 8 metres. Inside the Trilithon Horseshoe stands another smaller horseshoe of 19 blue stones. Lying at the base of the tallest Trilithon Stone is the Altar Stone which weighs 9 tonnes. Outside the Trilithon Horseshoe lies a circle of 40 smaller stones that are referred to as the Bluestone Circle. The perimeter consists of 30 Sarsen Stones weighing 28 tonnes each with 8 tonne lintels lining the top. Together they reach a height of nearly 5 metres.
- Running out of time to get that last minute gift before you leave WA? For something different check out [Mermaid Leather](#); For 25 years, the MacDermott brothers have been transforming fish skins sourced locally which include queen snapper, blue groper, pink snapper, gummy shark and bronze whaler shark into fish leather. Mermaid Leather is the only commercial fish leather specialist business in Australia. To their knowledge, there are less than a dozen such specialists around the world.



MODULE 5A – THREE PEAKS DRIVE

Scenery   



Sights   

Zoom Zoom   

This 20 km drive starts at quirky Dog Rock; a huge granite outcrop near the town centre with an unmistakable likeness to the head of a bloodhound sniffing the air and commences with a drive to the “Spark Plug” on Mount Melville for 360 degrees panoramic views of the Porongurup’s to the north round to the Princess Royal Harbour. The Desert Mounted Corps Memorial stands near the summit of Mount Clarence, the Padre White Lookout is

at the summit.

Next are the Forts at Mount Adelaide; Princess Royal Fortress was built in the 19th Century because of its strategic importance in the protection of the King George Sound and Princess Royal Harbour. It serves today as a military museum and heritage centre. The various items of military weaponry and heavy gun emplacements are on public display. The site also houses the [National Anzac Centre](#) and provides fantastic views of Princess Royal Harbour.

We finish with a nice drive along Middleton Beach to Emu Point, an ideal spot for a swim or a picnic thanks to clear, calm and shallow water, as well as grassy lawn and trees. Grab a coffee at [Emu Point Cafe](#).



MODULE 5B – TORNDIRROP NATIONAL PARK & DISCOVERY BAY

Scenery   

Sights   

Zoom Zoom   

One of the most scenic areas for whale spotting and cliff-top walks is Torndirrup National Park. Here, the Southern Ocean has sculpted the granite coastline into striking formations known as The Gap and Natural Bridge. For sensational views take we drive up to Albany Wind Farm and feel dwarfed by the towering turbines.

We visit the Historic Whaling Station at Discovery Bay, the only museum of its kind to be housed in a former whaling station. After World War II, a worldwide shortage of fats led to the development of the modern whaling industry. The Albany Whaling Company commenced operations in 1947 and in 1952 was succeeded by the Cheynes Beach Whaling Company. Shore whaling continued at Albany until 1978 when a downturn in the industry and mounting pressure from the environment movement led to the closure of the whaling station.



Today thousands visit Albany each season during whale watching season, and visit the whaling museum at Discovery Bay, at the site of the Cheynes Beach Whaling Company operation.



As well as being home to Australia's last operating whaling station, Discovery Bay now encompasses a stunning Botanic Garden of plants from Western Australia's south coast as well as a close up experience with friendly Australian Wildlife. Maximising its location, [Discovery Bay](#) is a showcase of amazing regional bio-diversity, yet still remains true to the original whaling display. Climb aboard the famous whale chaser to

experience life on board an actual whaling ship. History comes alive as you join a 40 minute guided tour, operating hourly from 10am-3pm each day, and find yourself immersed in the sights and sounds of the restored processing factory. Experience feature presentations inside the three whale oil storage tanks which have been carefully converted to theatres. Explore the photo and artefact galleries and marvel at the enormous whale skeletons on display.

MODULE 5C – MOUNT BARKER, PORONGURUP'S AND TWO PEOPLES BAY

Scenery   

Sights   

Zoom Zoom   

A 190 km drive that combines a visit to [Mount Romance](#), the world's largest Sandalwood oil distillery, with some walks amongst the ancient granite of the Porongurup Ranges. We finish at Two Peoples Bay where the surrounding bushland remains largely untouched and the scenery is beautiful.



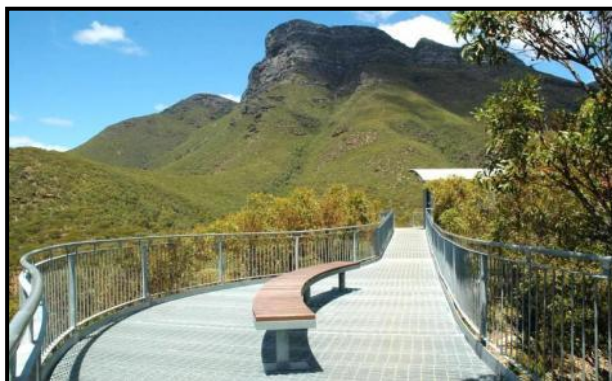
MODULE 5D – FITZGERALD COAST

Scenery   

Sights   

Zoom Zoom   

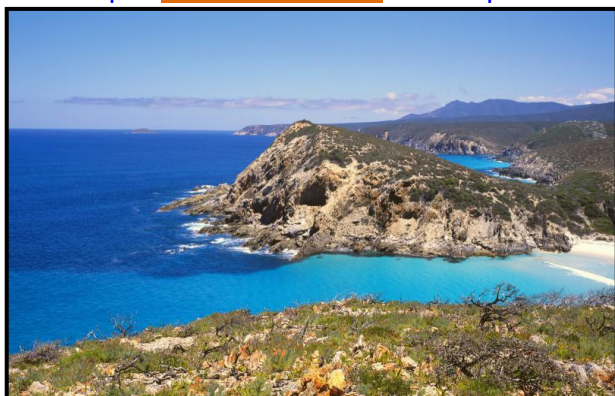
A 615 km drive from Albany to Esperance. First stop is the Bluff Knoll; a peak in the Stirling Ranges which one of only a few places to experience regular snowfalls in Western Australia.



Next we head for the picturesque waterfront holiday destination of [Hopetoun](#). It was once the port of the Phillips River goldfield and previously had served sealers, whaling ships and early settlers for lunch

After lunch we head into the magnificent [Fitzgerald River National Park](#) where the coastal scenery is spectacular, with grand headlands and pristine beaches unique to the south-east of Western Australia. We start by driving to [Hamersley Inlet](#) which lies in a deep winding valley carved through the hard schist and quartzite rock. Next we stop at [Cave Point](#), a lookout on the edge of the sea cliffs, and an ideal place to spot whales and seabirds.

Next stop is [Barren's Lookout](#) with superb views to Barren's Beach, Four Mile Beach, Culham Inlet and beyond. Time to feel the sand between your toes? Drive to the small sheltered beach below; [Barren's Beach](#), a popular swimming spot which features an interpretive display and art exhibit that provide intriguing insights into the area's natural and cultural values and the park's international significance as a conservation area. The final leg takes you to Esperance



MODULE 5E – GREAT OCEAN DRIVE

Scenery   

Sights   

Zoom Zoom   

Named by the RAC as the best Scenic drive in Western Australia the Great Ocean Drive captures some of the best coastal scenery Australia has to offer. The beaches have to be seen to be believed, with white powdery sand that is so fine it squeaks when you walk on it and bright, turquoise water.



Dotted along the coast are a succession of exquisitely sculpted granite headlands and a string of white windswept beaches, along the drive are spectacular panoramic views of the Recherche Archipelago.

You also get close up views of Esperance's wind farms and pass the Pink Lake salt lake.

MODULE 5E – WAVE ROCK

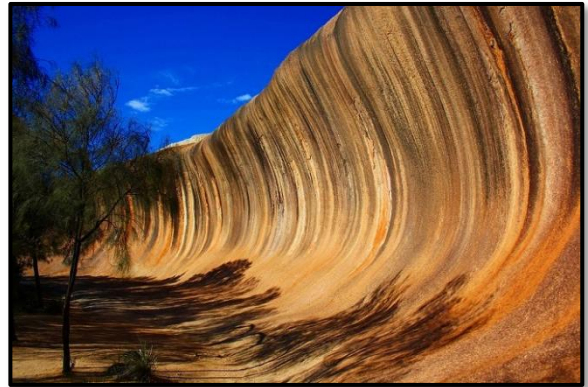
Scenery   

Sights   

Zoom Zoom   

A 720 km drive to return from Esperance to Perth.

First stop is for morning tea in Ravensthorpe, a small town with a population of some 500 people. The town was hit hard twice in 2017 with closure of the local nickel mine which employed about 270 people and the devastating floods that swept through the area.



Next we stop at the [Wave Rock](#) visitor information centre / Wildflower Shoppe & Wave Rock Cafe which is just 500 m from Wave Rock. Have some lunch and then walk it of whilst you look around Wave Rock, a granite cliff 15 metres high and 110 metres long shaped like a tall breaking ocean wave.

After lunch we continue on our way to Brookton were we stop for a leg stretch / refreshment / early dinner at The Bedford Arms Hotel built in 1903. The final leg takes you back to Perth.

MODULE 5X – ALBANY TO PERTH

Scenery   

Sights   

Zoom Zoom   

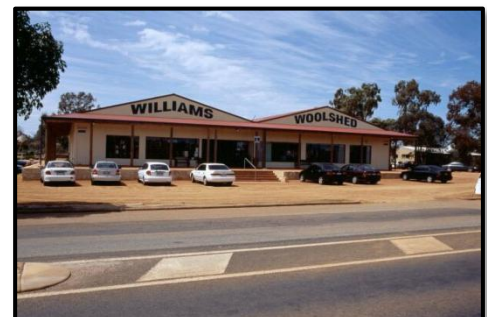
A 424 km drive from Albany back to Perth along the Albany Highway. First stop is at the Kojonup [Visitor Information Centre](#) were we explore one of the best local museums in the country: located beside the Visitor Information Centre are the Kodja Gallery and The Story Place. The centre immortalises the farm experience, life on "the reserve", the heartfelt stories of early settlers, the aspirations of the young and the community hopes for the future. Sitting right alongside The Kodja Place is the Roze Maze; more than one hundred species of heat-loving roses form a maze of complex paths.



Walk the maze to see the beautiful roses are bred especially for Australian conditions, and many are rare heritage species, while you watch the evolution of the iconic Australian pergola. The Rose Maze also weaves together the stories of three women: Yoondi; the Noongar woman, Elizabeth; an Englishwoman, and the Italian woman; Maria. Through letters, a journal and personal dialogues these women impart a powerful personal message of the trials and hardships of rural life in the early 20th century, stories of hardship,

loneliness and isolation.

Our last stop on our way to Perth is a leg stretch / coffee break at the [Williams Woolshed](#); a large café with 6 different stores from a clothing shop through to gift & kitchenware's and a larder that stocks local produce.



The final leg takes you back to Perth.

MODULE 6 – NORTHERN EXPOSURE

This module has a series of six drives that let you explore the Northern Goldfields, Pilbara and Coral Coast. The drives take you from Kalgoorlie to Meekatharra, from Meekatharra to Karijini National Park and from Karijini to Ningaloo Reef. The next drive takes you to the Shark Bay Heritage Area, followed by a drive to Kalbarri and a final drive to Perth

KARIJINI SIGHTS

Covering 627,422 hectares just north of the Tropic of Capricorn in the Hamersley Range, [Karijini National Park](#) is Western Australia's second largest park. Massive mountains and escarpments rise out of the flat valleys. The high plateau is dissected by breathtaking gorges, and stony, tree-lined watercourses wind their way over the dusty plain. Erosion has slowly carved this landscape out of rocks that are over 2,500 million years old. There are so many beautiful gorges and sites to visit in Karijini National Park, but be sure to include Dales Gorge, Fern Pool, Circular Pool, Fortescue Falls (the park's only permanent waterfall), Wean Gorge and Oxers Lookout.



CORAL BAY SIGHTS

If you want to know what paradise looks like this is definitely it! Coral Bay is a nice little place, situated in the middle of nowhere and seemingly untouched it is the southern gateway to the Ningaloo Reef. The white sandy beaches go on for miles and the water is as warm as bathwater (+27C) and a magnificent colour of aqua. The World Heritage listed Ningaloo Reef is one of the largest and most biodiverse fringing reefs on the planet, and of all the top things to see in Australia, it's among the easiest to access. Located just a few metres from the shore you can simply step off the beach and snorkel in the shallows. [Coral Bay Ecotours](#) offer glass bottom boat tours, manta ray snorkel tours and more.

SHARK BAY HERITAGE AREA SIGHTS

Once a ramshackle town that grew up around a pearling camp, Denham is now the main administrative and population centre of the Shark Bay area. Located on the western coastline of Peron Peninsula, with views across the waters of Shark Bay towards Dirk Hartog Island, it is totally surrounded by the World Heritage Area. Visit the [Shark Bay Discovery Centre](#) for everything there is to know about Shark Bay World Heritage area. Essentially a one-stop informative display covering all of Shark Bay's natural and cultural features, this centre is a must-see for every visitor to the area.

The [Dolphins of Monkey Mia](#) area are famous for their almost daily ritual of swimming to shore to interact with people. As many as five wild bottlenose dolphins regularly visit the beach, usually in the morning, moving up and down the shoreline within arm's reach of the crowd, making Monkey Mia one of the most incredible dolphin watching destinations in Australia. A specially trained ranger controls the interaction session, choosing a few lucky onlookers to handfeed the dolphins.

While you're sure to see dolphins in the mornings, keep an eye on the bay at other times as dolphins frolic and feed, regularly leaping into the air. Monkey Mia is half an hour's drive from Denham.



KALBARRI SIGHTS



- [Kalbarri](#) is where the Murchison River meets the Indian Ocean; it's a favourite holiday playground blessed with a stunning coastline, soaring river gorges and protected swimming bays. What's more, the weather is sunny and warm all year round making any time a great time to visit. Just a short drive out of town is the Kalbarri National Park, one of WA's most exciting and spectacular natural attractions, featuring the Ross Graham Lookout, Hawk's Head Lookout and The Loop and Z Bend.
- Follow one of the many walking trails, join a river cruise, or, if you're feeling adventurous, tackle a challenging hike or try abseiling.
- Explore [Kalbarri's Coastal Cliffs](#) that feature magnificent, towering cliffs that plummet to the waves below. Starting at Red Bluff, named by Willem de Vlamingh in 1697, the dramatic coastal cliffs extend 13 kilometres to the National Park's southern boundary. Numerous sign-posted pathways, lookouts and balustrades have been provided allow you to safely explore the ruggedly beautiful coastline. Look for migrating whales between late June and November.
- Feed the friendly local pelicans at 8.45am daily on the river foreshore
- South of Kalbarri explore the sand dunes on a sand board or [Quad Bike Tour](#).

MODULE 6A – KAL TO MEEKA

Scenery   

Sights   

Zoom Zoom   

Make an early start for this 870 km drive past gold rush ghost towns on your way to Meekatharra.

Our first stop is [Gwalia Ghost Town and Museum](#) where you can explore over a dozen buildings including miners' cottages, single men's camps, Patroni's Guest House and Mazza's Store. Up on the hill in the Mine Precinct, there are the Mine Manager's House (now [Hoover House Bed & Breakfast](#)), the Assay Office, the headframe and winder and many fascinating outdoor exhibits.

Highlights include 'Midland', one of three steam engines that worked on the woodlines supplying the Sons of Gwalia mine with timber and fuel. There is also the first passenger tram in Western Australia, which ran between Leonora and Gwalia from 1903 to 1921. The collection of smaller objects housed in the Mine Office explores community, cultural and mining life and features the heritage of Afghans, Italians and Yugoslavs. Download the [Gwalia Interactive Map](#) for your phone or tablet to guide you during your walk.

Leg 2 takes us to Agnew; a small historic gold rush town once had a population of 500. All that remains today is the Agnew Hotel built in 1945 which is our lunch stop. Nearby stand the head frame and battery from the old East Murchison United gold mine.

Leg 3 takes us to [Sandstone](#); a picturesque town rich in gold rush history. In 1894, a major gold discovery was made at Sandstone and the town's wide streets are a reminder of its heyday in the decade before World War One. Nowadays it is sleepy little mining and agriculture town with a population of around 50 people.



Leg 4 takes us to [Mount Magnet](#); the town was proclaimed in 1895 and by 1902 it was booming with some 14 hotels, two newspapers and 30 goldmines. At the time the pre-eminent mine was that at Hill 50 which was producing up to 3000 oz. a month and was widely regarded as a mine which would last forever. Interestingly although it fell into decline after 1915

(when the miners went off to war) today it is central to the town's renewed importance as a gold mining centre. The prominent hill rising above the township was named West Mount Magnet in 1854 by surveyor Robert Austin who noticed that its magnetic qualities interfered with his compass. Drive to the lookout where the entire Hill 50 mining operation can be seen. The town has many [services and facilities](#) including two supermarkets, two roadhouses, three hotels, a cafe, butcher, nursing post, post office and a cafe bakery; should make an excellent afternoon tea stop.

The last leg of the day takes us to [Meekatharra](#); or Meeka as the locals call it, is the largest centre in the Murchison region. First settled in 1896 as a gold prospecting town the area features a host of old mining pits and relics from the wild [Australian Gold Rush](#) era.

- Walk down Main Street and take a look at the State Battery and other interesting relics of the town's gold prospecting past.
- View over 100 photographs and interesting memorabilia of this outback town at the Meekatharra Museum.

- Catch a movie at the outdoor Picture Garden
- Take the Meeka Town Heritage Walk or the Creek Trail to discover the history and heritage of Meekatharra and its people.
- Follow the three kilometre Meeka Rangelands Discovery Trail for a fascinating insight into the Indigenous history, nature and cultural heritage of Meekatharra.

MODULE 6B – TO KARIJINI ECO RESORT

Scenery 

Sights 

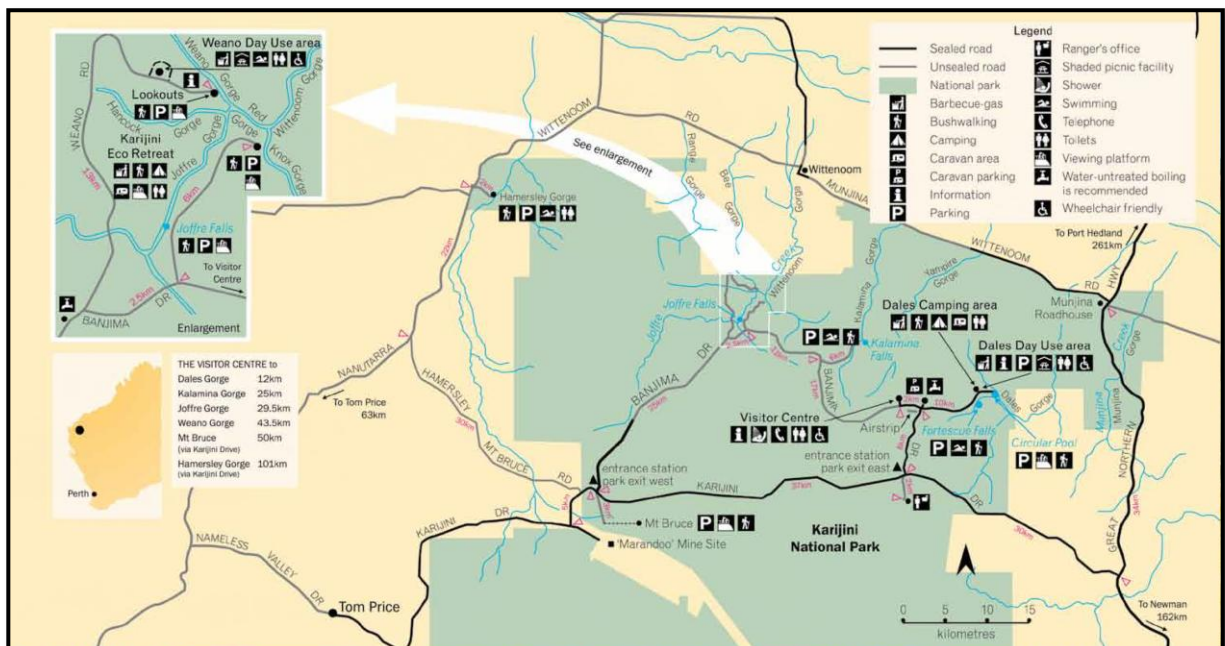
Zoom Zoom 

Leg 1 takes us to 25 Mile Well, located 40 kilometres north of town; the Meekatharra Lions Club restored the well as a tribute to the old drovers and stockmen

The next leg takes us to Newman, the first of the company towns on this drive. The town was established by Mt. Newman Mining Co. Pty Ltd (a subsidiary of BHP Billiton) in 1968. Newman grew rapidly in the 70s and 80s with management of the town 'sold' to the Shire of East Pilbara in 1981 for \$1.00. Mt. Whaleback mine is the largest open cut Iron Ore mine in the world, with a pit length of 5.5km. To the north and east of Newman are smaller 'satellite' mines. In total over 100 million tonnes of Ore are produced each year by the seven BHP Billiton mines and transported by rail to Port Hedland for export. Newman has a permanent population of 7,000 plus a FIFO workforce averaging around 4,000 people.



Leg 3 takes us to our overnight stop at the [Karijini Eco Resort](#) where you get an opportunity to go "glamping" in the centre of the National Park. Whilst most of the leg is on sealed roads the very last section into the resort as well as some of the roads to the gorges, swimming holes and lookouts in the park are gravel.



MODULE 6C – TO CORAL BAY

Scenery 

Sights 

Zoom Zoom 

Leg 1 of this 670 km drive takes us to Paraburdoo; a purpose built mining town that lies on the desert fringe of the Hamersley Ranges. The road, built to support mining operations, from the edge of the park to Paraburdoo offers some of the best scenery in WA. In Paraburdoo you can park your Five next to a Haul Pack for a picture. Next stop is [Nanutarra Roadhouse](#) to refuel both car and driver. The last leg takes us to Coral Bay.

MODULE 6D – CORAL BAY TO SHARK BAY

Scenery 

Sights 

Zoom Zoom 

Leg 1 takes us to Carnarvon on the Indian Ocean at the mouth of the Gascoyne River where we stop for morning tea and a look around at the one mile jetty. Leg 2 takes us to the BP Overlander Roadhouse to refuel both car and driver. The last leg is the 130 km [Tourist Drive 353](#) that runs between the Overlander Roadhouse and Monkey Mia we stop at the Stromatolites in Hamelin Bay and the tiny cockleshells of Shell Beach before finishing at the Shark Bay Heritage Centre in Denham



The drive to Monkey Mia to see the dolphins interact with humans is part of the next drive

MODULE 6E – SHARK BAY TO KALBARRI

Scenery 

Sights 

Zoom Zoom 

We start the day by heading to the [Dolphins of Monkey Mia](#) area are famous for their almost daily ritual of swimming to shore to interact with people. As many as five wild bottlenose dolphins regularly visit the beach, usually in the morning, moving up and down the shoreline within arm's reach of the crowd, making Monkey Mia one of the most incredible dolphin watching destinations in Australia. A specially trained ranger controls the interaction session, choosing a few lucky onlookers to handfeed the dolphins.



While you're sure to see dolphins in the mornings, keep an eye on the bay at other times as dolphins frolic and feed, regularly leaping into the air. Monkey Mia is half an hour's drive from Denham.

Times for the dolphin experiences depend on, if, and when the dolphins visit the beach. Between 7:45am and 12 noon up to four mature female dolphins can be offered fish the first three times they visit. If the dolphins

visit more than three times or after 12 noon they will not be fed. It is best to arrive early as dolphin experiences may finish well before noon. Please meet the rangers on the boardwalk



at the front of the visitor centre (near the steps to the beach) for a briefing at 7:45am. Next we head for [Billabong Roadhouse](#) located halfway between Geraldton and Carnarvon for lunch.

Leg 3 takes us to the [Hawks Head Lookout](#) and the [Ross Graham Lookout](#) which offers breathtaking views over the gorges carved by the Murchison River within the [Kalbarri National Park](#). Leg 4 takes us to the Kalbarri Township.

MODULE 6F – KALBARRI TO PERTH

Scenery   

Sights   

Zoom Zoom   

A 620 km drive from the Kalbarri Visitors Centre back to Perth. First stop is Port Gregory; a small seaside town bounded by a 'Pink Lake' and protected by a 5 km coral reef which provides a natural harbour. Next we drive through the [Chapman Valley](#), were the flat-topped



Moresby Ranges dominate the landscape, to [Greenough Historic Settlement](#). During the 1860s Greenough became a thriving agricultural area; its eventual decline was caused by a combination of wheat rust attacks, drought, flood and poor agricultural prices. Greenough's population dropped dramatically in the first half of the 20th century, and many of its buildings fell into disrepair. Today, the Greenough Historic Settlement comprises twenty stone buildings with some interesting stories.

From there we head for Starfish cafe in the Cray-fishing town of Port Denison, next we visit the Pinnacles, one of Western Australia's iconic tourist attractions, in [Nambung National Park](#). Hidden away amongst the lonely dunes and windswept heath land of WA's Turquoise Coast is a barren,



otherworldly desert of stone pillars rising up out of the golden sand. Ranging in size from less than a foot to 3m high, these mysterious rocks form ghostly shapes and shadows. We finish by driving to Perth along the Indian Ocean Drive which never strays too far from the coast, and has colourful scenery with stretches of sparkling white sand hills.

MODULE 6X – PERTH TO MEEKA

Scenery   

Sights   

Zoom Zoom   

A 775 km drive from Perth to the start of Module 6B. First stop is [New Norcia Monastery](#), Australia's only Monastic Town (refer drive 2D for details). After a quick look around continue on leg 2 to the former gold rush settlement of [Paynes Find](#). Established in 1911, the Paynes Find Gold Battery is the only working battery in the State. Refuel man and machine at the roadhouse and have a look at the museum and displays before continuing on leg 3 Mount Magnet and leg 4 to Meeka (refer to Module 6A for details).

Spring 2019 Itinerary

The MX-5 Club of WA has put together an itinerary for Fivers from the East to explore WA in Spring 2019. The core modules assume you drive across the Nullarbor and start in Kalgoorlie on Wednesday 23 October 2019. Alternatively you can join in Perth on Friday 25 October when we will have a GoWest welcome dinner in Perth.

Areas to be visited over the next 18 days include:

- Perth area, Avon valley and The Pinnacles
- Busselton and Margaret River regions
- Albany and the Southern Forests
- Esperance and the Southern ocean
- Wave Rock and the Wheatbelt

The entire GoWest program finishes back in Perth on November 12. If Participants want to reduce the overall time they can bail out at any time to return to Perth

For those that want to explore more we have a 10 day tour north of Perth commencing October 15 including the Pilbara, Karijini, Coral Bay, Shark Bay and Kalbarri which you can join from both Perth and Kalgoorlie

The WA club will provide detailed cruise notes for each of the module drives and our club members look forward to join you on some of the runs.

You will need to arrange your own accommodation and we have provided some suggestions on page 8.

The GoWest Spring 2019 Event will only happen if Fivers from the Eastern States Clubs show sufficient interest. It is what we see it as a one off opportunity, stimulated by the interest shown by Eastern States Clubs, to tour WA in your MX-5.

We will do everything we can to welcome you to our state and look forward to seeing you in 2019.

Of course as an alternative you can come as individuals some other time and we will provide all our notes to guide you on your tour.

The West is waiting for you!



Spring 2019 Itinerary, Dates, Modules and Distances

Date	Core Modules					Alternative Modules				
	Module	Start	Finish	Distance	Module Description	Module	Start	Finish	Distance	Module Description
Tue, 15 Oct 2019	6X	Perth	Meekatharra	775 km	Perth to Meeka	6A	Kalgoorlie	Meekatharra	870 km	Kal to Meeka
Wed, 16 Oct 2019						6B	Meekatharra	Karijini ER	870 km	Meeka to Karijini NP
Thu, 17 Oct 2019							Karijini ER	Karijini ER		Free Day
Fri, 18 Oct 2019							Karijini ER	Karijini ER		Free day
Sat, 19 Oct 2019						6C	Karijini ER	Coral Bay	670 km	Karijini NP to Ningaloo Reef
Sun, 20 Oct 2019							Coral Bay	Coral Bay		Free day
Mon, 21 Oct 2019						6D	Coral Bay	Denham	610 km	Ningaloo Reef to Shark Bay
Tue, 22 Oct 2019						6E	Denham	Kalbarri	430 km	Shark Bay to Kalbarri
Wed, 23 Oct 2019	1A	Kalgoorlie	Kalgoorlie	473/575 km	Northern Goldfields		Kalbarri	Kalbarri		Free Day
Thu, 24 Oct 2019	1B	Kalgoorlie	Perth	640 km	Golden Pipeline	6F	Kalbarri	Perth	620 km	Kalbarri to Perth
Fri, 25 Oct 2019		Perth	Perth		Free Day, Welcome Dinner					
Sat, 26 Oct 2019	2A	Perth	Perth	72 km	Kings Park, River & Ocean, free afternoon					
Sun, 27 Oct 2019	2B	Perth	Perth	295 km	Avon Valley					
Mon, 28 Oct 2019		Perth	Perth		Free Day					
Tue, 29 Oct 2019	2D	Perth	Perth	512 km	New Norcia & The Pinnacles					
Wed, 30 Oct 2019		Perth	Perth		Free Day					
Thu, 31 Oct 2019	2C	Perth	Perth	160 km	Darling Ranges, free afternoon					
Fri, 1 Nov 2019	2E	Perth	Busselton	320 km	Perth to Busselton					
Sat, 2 Nov 2019	3A	Busselton	Busselton	400 km	Geographe Rally					
Sun, 3 Nov 2019		Busselton	Busselton		Free day					
Mon, 4 Nov 2019	3B	Busselton	Pemberton	265 km	The Golden Triangle					
Tue, 5 Nov 2019	4A	Pemberton	Pemberton	83 km	Karri Forrest Explorer, lots of stops					
Wed, 6 Nov 2019	4B	Pemberton	Albany	290 km	Southern Forest					
Thu, 7 Nov 2019	5A	Albany	Albany	20 km	Three Peaks Drive, free afternoon					
Fri, 8 Nov 2019	5C	Albany	Albany	190 km	Mt Barker, Porongurup's & Two Peoples Bay					
Sat, 9 Nov 2019	5B	Albany	Albany	63 km	Tomdirrup NP & Discovery Bay, free afternoon					
Sun, 10 Nov 2019	5D	Albany	Esperance	615 km	Fitzgerald Coast	5X	Albany	Perth	424 km	Albany to Perth
Mon, 11 Nov 2019	5E	Esperance	Esperance	40 km	Great Ocean Drive, free afternoon					
Tue, 12 Nov 2019	5F	Esperance	Perth	720 km	Wave Rock					

RATINGS

Rating these drives initiated a fair bit of discussion; what some people consider scenic may not be so to others, and what one considers a challenging drive is open to a wide range of interpretation. Oceanside drives are scenic to many people, but for those who live in this type of environment a chance to drive somewhere different with less traffic about may be more interesting. Our ratings are based on the following:

Scenery



The drive is not listed for the scenery



Rural landscape with some views and scenery



Great scenery with views of dams, lakes, rivers, hills or forests

Sights



The drive is not listed for the sights



Includes Lookouts, Museums, Markets, Arts & Crafts, etc.



Several sights worth seeing

Zoom Zoom



Not particularly challenging; mainly straight roads



Some challenging sections, but generally gradual and gentle corners



Mostly outstanding driving, plenty of twists, turns, sweeping curves, ascents and descents

YOU WANT MORE?

Western Australia covers an area of 2.6 million square kilometres and the Western Australian road network is some 174 000 km in length. Main Roads Western Australia, the State's road authority, is responsible for some 17 700 km or about 10 percent. So with more than 174,000 km of roads in WA there must be many more bits of scenic and challenging bitumen out there! Have a look at these websites for more suggestions and information:

<http://au.news.yahoo.com/thewest/travel/a/-/wa/6940836/great-drives-of-wa>

www.motowhere.com/listpaths/country/14/region/6

www.drivewa.com

www.starsofwa.com.au

<http://www.australiasgoldenoutback.com/outback-australia-drive-routes>

explorewestoz.com

www.westernaustralia.com/trips

SOURCES

Materials for this document were created by members of the Mazda MX-5 club of Western Australia Inc. and in part reproduced, as permitted for non-commercial use, from government websites sites including www.dpaw.wa.gov.au, www.westernaustralia.com, www.watercorporation.com.au and other sources that permit reuse for non-commercial purposes.